

User Manual



ULTRATONE KT108

Ultra-Compact 15-Watt Keyboard Amplifier with
VTC-Technology and Original 8" BUGERA Speaker

Table of Contents

- Important Safety Instructions 3**
- Legal Disclaimer 3**
- Limited Warranty 3**
- 1. Introduction 5**
 - 1.1 Before you get started 5
 - 1.1.1 Shipment..... 5
 - 1.1.2 Initial operation 5
 - 1.1.3 Online registration 5
- 2. Wiring Tips 6**
- 3. Control Elements 6**
- 4. Audio Connections 7**
- 5. Specifications..... 8**

EN Important Safety Instructions



Terminals marked with this symbol carry electrical current of sufficient magnitude to constitute risk of electric shock.

Use only high-quality professional speaker cables with ¼" TS or twist-locking plugs pre-installed. All other installation or modification should be performed only by qualified personnel.



This symbol, wherever it appears, alerts you to the presence of uninsulated dangerous voltage inside the enclosure - voltage that may be sufficient to constitute a risk of shock.



This symbol, wherever it appears, alerts you to important operating and maintenance instructions in the accompanying literature. Please read the manual.



Caution

To reduce the risk of electric shock, do not remove the top cover (or the rear section). No user serviceable parts inside. Refer servicing to qualified personnel.



Caution

To reduce the risk of fire or electric shock, do not expose this appliance to rain and moisture. The apparatus shall not be exposed to dripping or splashing liquids and no objects filled with liquids, such as vases, shall be placed on the apparatus.



Caution

These service instructions are for use by qualified service personnel only. To reduce the risk of electric shock do not perform any servicing other than that contained in the operation instructions. Repairs have to be performed by qualified service personnel.

1. Read these instructions.
2. Keep these instructions.
3. Heed all warnings.
4. Follow all instructions.
5. Do not use this apparatus near water.
6. Clean only with dry cloth.
7. Do not block any ventilation openings. Install in accordance with the manufacturer's instructions.
8. Do not install near any heat sources such as radiators, heat registers, stoves, or other apparatus (including amplifiers) that produce heat.

9. Do not defeat the safety purpose of the polarized or grounding-type plug. A polarized plug has two blades with one wider than the other. A grounding-type plug has two blades and a third grounding prong. The wide blade or the third prong are provided for your safety. If the provided plug does not fit into your outlet, consult an electrician for replacement of the obsolete outlet.

10. Protect the power cord from being walked on or pinched particularly at plugs, convenience receptacles, and the point where they exit from the apparatus.

11. Use only attachments/accessories specified by the manufacturer.



12. Use only with the cart, stand, tripod, bracket, or table specified by the manufacturer, or sold with the apparatus. When a cart is used, use caution when moving the cart/apparatus combination to avoid

injury from tip-over.

13. Unplug this apparatus during lightning storms or when unused for long periods of time.

14. Refer all servicing to qualified service personnel. Servicing is required when the apparatus has been damaged in any way, such as power supply cord or plug is damaged, liquid has been spilled or objects have fallen into the apparatus, the apparatus has been exposed to rain or moisture, does not operate normally, or has been dropped.

15. The apparatus shall be connected to a MAINS socket outlet with a protective earthing connection.

16. Where the MAINS plug or an appliance coupler is used as the disconnect device, the disconnect device shall remain readily operable.



LEGAL DISCLAIMER

TECHNICAL SPECIFICATIONS AND APPEARANCES ARE SUBJECT TO CHANGE WITHOUT NOTICE AND ACCURACY IS NOT GUARANTEED. BEHRINGER IS PART OF THE MUSIC GROUP (MUSIC-GROUP.COM). ALL TRADEMARKS ARE THE PROPERTY OF THEIR RESPECTIVE OWNERS. MUSIC GROUP ACCEPTS NO LIABILITY FOR ANY LOSS WHICH MAY BE SUFFERED BY ANY PERSON WHO RELIES EITHER WHOLLY OR IN PART UPON ANY DESCRIPTION, PHOTOGRAPH OR STATEMENT CONTAINED HEREIN. COLORS AND SPECIFICATIONS MAY VARY FROM ACTUAL PRODUCT. MUSIC GROUP PRODUCTS ARE SOLD THROUGH AUTHORIZED FULLFILLERS AND RESELLERS ONLY. FULLFILLERS AND RESELLERS ARE NOT AGENTS OF MUSIC GROUP AND HAVE ABSOLUTELY NO AUTHORITY TO BIND MUSIC GROUP BY ANY EXPRESS OR IMPLIED

UNDERTAKING OR REPRESENTATION. THIS MANUAL IS COPYRIGHTED. NO PART OF THIS MANUAL MAY BE REPRODUCED OR TRANSMITTED IN ANY FORM OR BY ANY MEANS, ELECTRONIC OR MECHANICAL, INCLUDING PHOTOCOPYING AND RECORDING OF ANY KIND, FOR ANY PURPOSE, WITHOUT THE EXPRESS WRITTEN PERMISSION OF MUSIC GROUP IP LTD.

ALL RIGHTS RESERVED.

© 2012 MUSIC Group IP Ltd.

Trident Chambers, Wickhams Cay, P.O. Box 146, Road Town, Tortola, British Virgin Islands

LIMITED WARRANTY

§ 1 Warranty

1 This limited warranty is valid only if you purchased the product from a MUSIC Group Authorized Reseller in the country of purchase. A list of authorized resellers can be found on BEHRINGER's website behringer.com under "Where to Buy", or you can contact the MUSIC Group office closest to you.

2 MUSIC Group* warrants the mechanical and electronic components of this product to be free of defects in material and workmanship if used under normal operating conditions for a period of one (1) year from the original date of purchase (see the Limited Warranty terms in § 4 below), unless a longer minimum warranty period is mandated by applicable local laws. If the product shows any defects within the specified warranty period and that defect is not excluded under § 4, MUSIC Group shall, at its discretion, either replace or repair the product using suitable new or reconditioned product or parts. In case MUSIC Group decides to replace the entire product, this limited warranty shall apply to the replacement product for the remaining initial warranty period, i.e., one (1) year (or otherwise applicable minimum warranty period) from the date of purchase of the original product.

3 Upon validation of the warranty claim, the repaired or replacement product will be returned to the user freight prepaid by MUSIC Group.

4 Warranty claims other than those indicated above are expressly excluded.

PLEASE RETAIN YOUR SALES RECEIPT. IT IS YOUR PROOF OF PURCHASE COVERING YOUR LIMITED WARRANTY. THIS LIMITED WARRANTY IS VOID WITHOUT SUCH PROOF OF PURCHASE.

§ 2 Online registration

Please do remember to register your new BEHRINGER equipment right after your purchase at behringer.com under "Support" and kindly read the terms and conditions of our limited warranty carefully. Registering your purchase and equipment with us helps us process your repair claims quicker and more efficiently. Thank you for your cooperation!

§ 3 Return materials authorization

1 To obtain warranty service, please contact the retailer from whom the equipment was purchased. Should your MUSIC Group Authorized Reseller not be located in your vicinity, you may contact the MUSIC Group Authorized Fulfiller for your country listed under

“Support” at behringer.com. If your country is not listed, please check if your problem can be dealt with by our “Online Support” which may also be found under “Support” at behringer.com. Alternatively, please submit an online warranty claim at behringer.com BEFORE returning the product. All inquiries must be accompanied by a description of the problem and the serial number of the product. After verifying the product’s warranty eligibility with the original sales receipt, MUSIC Group will then issue a Return Materials Authorization (“RMA”) number.

② Subsequently, the product must be returned in its original shipping carton, together with the return authorization number to the address indicated by MUSIC Group.

③ Shipments without freight prepaid will not be accepted.

§ 4 Warranty Exclusions

① This limited warranty does not cover consumable parts including, but not limited to, fuses and batteries. Where applicable, MUSIC Group warrants the valves or meters contained in the product to be free from defects in material and workmanship for a period of ninety (90) days from date of purchase.

② This limited warranty does not cover the product if it has been electronically or mechanically modified in any way. If the product needs to be modified or adapted in order to comply with applicable technical or safety standards on a national or local level, in any country which is not the country for which the product was originally developed and manufactured, this modification/adaptation shall not be considered a defect in materials or workmanship. This limited warranty does not cover any such modification/adaptation, regardless of whether it was carried out properly or not. Under the terms of this limited warranty, MUSIC Group shall not be held responsible for any cost resulting from such a modification/adaptation.

③ This limited warranty covers only the product hardware. It does not cover technical assistance for hardware or software usage and it does not cover any software products whether or not contained in the product. Any such software is provided “AS IS” unless expressly provided for in any enclosed software limited warranty.

④ This limited warranty is invalid if the factory-applied serial number has been altered or removed from the product.

⑤ Free inspections and maintenance/repair work are expressly excluded from this limited warranty, in particular, if caused by improper handling of the product by the user. This also applies to defects caused by normal wear and tear, in particular, of faders, crossfaders, potentiometers, keys/buttons, guitar strings, illuminants and similar parts.

⑥ Damage/defects caused by the following conditions are not covered by this limited warranty:

- improper handling, neglect or failure to operate the unit in compliance with the instructions given in BEHRINGER user or service manuals;

- connection or operation of the unit in any way that does not comply with the technical or safety regulations applicable in the country where the product is used;
- damage/defects caused by acts of God/Nature (accident, fire, flood, etc) or any other condition that is beyond the control of MUSIC Group.

⑦ Any repair or opening of the unit carried out by unauthorized personnel (user included) will void the limited warranty.

⑧ If an inspection of the product by MUSIC Group shows that the defect in question is not covered by the limited warranty, the inspection costs are payable by the customer.

⑨ Products which do not meet the terms of this limited warranty will be repaired exclusively at the buyer’s expense. MUSIC Group or its authorized service center will inform the buyer of any such circumstance. If the buyer fails to submit a written repair order within 6 weeks after notification, MUSIC Group will return the unit C.O.D. with a separate invoice for freight and packing. Such costs will also be invoiced separately when the buyer has sent in a written repair order.

⑩ MUSIC Group Authorized Resellers do not sell new products directly in online auctions. Purchases made through an online auction are on a “buyer beware” basis. Online auction confirmations or sales receipts are not accepted for warranty verification and MUSIC Group will not repair or replace any product purchased through an online auction.

§ 5 Warranty transferability

This limited warranty is extended exclusively to the original buyer (customer of authorized reseller) and is not transferable to anyone who may subsequently purchase this product. No other person (reseller, etc.) shall be entitled to give any warranty promise on behalf of MUSIC Group.

§ 6 Claim for damage

Subject only to the operation of mandatory applicable local laws, MUSIC Group shall have no liability to the buyer under this warranty for any consequential or indirect loss or damage of any kind. In no event shall the liability of MUSIC Group under this limited warranty exceed the invoiced value of the product.

§ 7 Limitation of liability

This limited warranty is the complete and exclusive warranty between you and MUSIC Group. It supersedes all other written or oral communications related to this product. MUSIC Group provides no other warranties for this product.

§ 8 Other warranty rights and national law

① This limited warranty does not exclude or limit the buyer’s statutory rights as a consumer in any way.

② The limited warranty regulations mentioned herein are applicable unless they constitute an infringement of applicable mandatory local laws.

③ This warranty does not detract from the seller’s obligations in regard to any lack of conformity of the product and any hidden defect.

§ 9 Amendment

Warranty service conditions are subject to change without notice. For the latest warranty terms and conditions and additional information regarding MUSIC Group’s limited warranty, please see complete details online at behringer.com.

* MUSIC Group Macao Commercial Offshore Limited of Rue de Pequim No. 202-A, Macau Finance Centre 9/J, Macau, including all MUSIC Group companies

1. Introduction

Congratulations! By purchasing the KT108, you have obtained a first-class keyboard amplifier that offers you the authentic tube sound simulation in an amazingly compact housing. The two instrument inputs and the additional CD player input make the ULTRATONE KT108 a truly flexible practice amp that will be tons of fun to use, no matter where or when you use it.

VTC Virtual Tube Circuitry

The VTC Virtual Tube Circuitry was specially developed to lend the keyboard sound the unique character of classic tube amps.

Jam it up!

With its CD player input, your KT108 is the ultimate practice amp, because it couldn't be easier to play along to your favorite music. If you don't want anybody listening to what you're playing, or simply wish to avoid disturbing the neighbors, just use your headphones. The BEHRINGER HPS3000 is ideal just for that.

A companion for life!

The electronic components in your ULTRATONE KT108 have been built into a robust metal enclosure for maximum protection. The cabinet is made of high-grade wood covered with durable vinyl. The KT108 will never let you down, even when the going gets tough.

- ◆ Please read the manual carefully and keep it around for future reference.

ATTENTION!

- ◆ High volume levels can damage your hearing or your headphones. Please turn the volume control to zero (all the way to the left) before you power up the amp. Always make sure you use appropriate volume levels.

1.1 Before you get started

1.1.1 Shipment

Your KT108 was carefully packed at the factory, and the packaging was designed to protect the unit from rough handling. Nevertheless, we recommend that you carefully examine the packaging and its contents for any signs of physical damage that may have occurred during transit.

- ◆ If the unit is damaged, please do NOT return it to BEHRINGER. Instead, notify your dealer and the shipping company immediately. Otherwise, claims for damage or replacement may not be honored.
- ◆ Always use the original packing carton to prevent damage during storage or transport.
- ◆ Make sure that no children are left unsupervised with the KT108 or its packaging.
- ◆ Please ensure proper disposal of all packing materials.

1.1.2 Initial operation

Be sure that there is enough space around the unit for cooling. To avoid overheating, please do not place the ULTRATONE near radiators and other equipment emanating heat.

- ◆ Please keep in mind that all the equipment has to be grounded at all times. For your own protection, never change or disable the grounding on your equipment or on the cables! The unit shall always be connected to the mains socket outlet with a protective earthing connection.

1.1.3 Online registration

Please register your new BEHRINGER equipment right after your purchase by visiting <http://behringer.com> and read the terms and conditions of our warranty carefully.

Should your BEHRINGER product malfunction, it is our intention to have it repaired as quickly as possible. To arrange for warranty service, please contact the BEHRINGER retailer from whom the equipment was purchased. Should your BEHRINGER dealer not be located in your vicinity, you may directly contact one of our subsidiaries. Corresponding contact information is included in the original equipment packaging (Global Contact Information/European Contact Information). Should your country not be listed, please contact the distributor nearest you. A list of distributors can be found in the support area of our website (<http://behringer.com>).

Registering your purchase and equipment with us helps us process your repair claims more quickly and efficiently.

Thank you for your cooperation!

2. Wiring Tips

Figures 2.1 and 2.2 show you how to connect your keyboard to the amplifier.

If you want to use an effects unit (for example, the BEHRINGER X V-AMP) to experiment with some out-of-the-ordinary sounds, you can connect your keyboard directly to the input of the effects processor. Then, connect a second cable from the effects output to the input on your keyboard amp.

- ◆ The built-in loudspeaker is disabled automatically when you plug in the headphones [7].

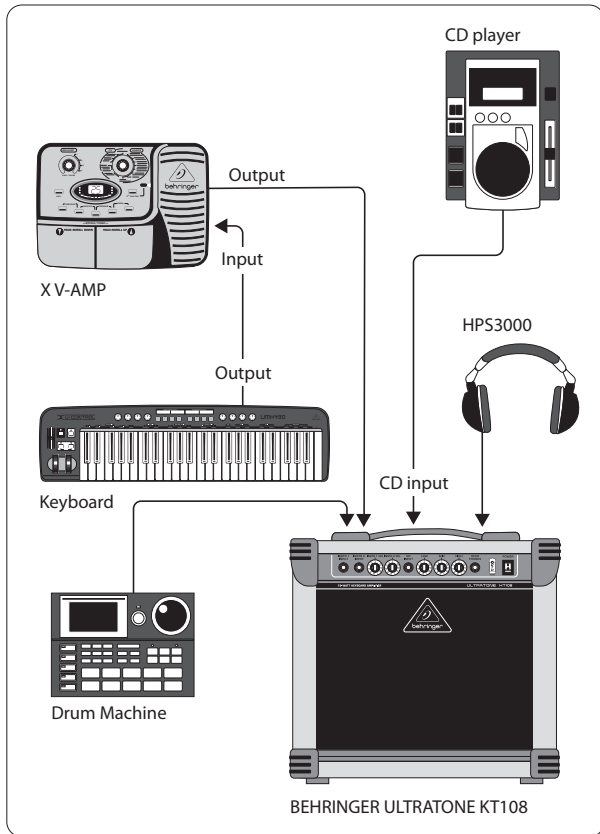


Fig. 2.1: Example of a setup using the ULTRATONE KT108

Fig. 2.2 shows a recommended setup for amplifying the vintage sound of your KT108 using a sound reinforcement system of any size. This way, you can also use your amp for playing live or for rehearsals with your band.

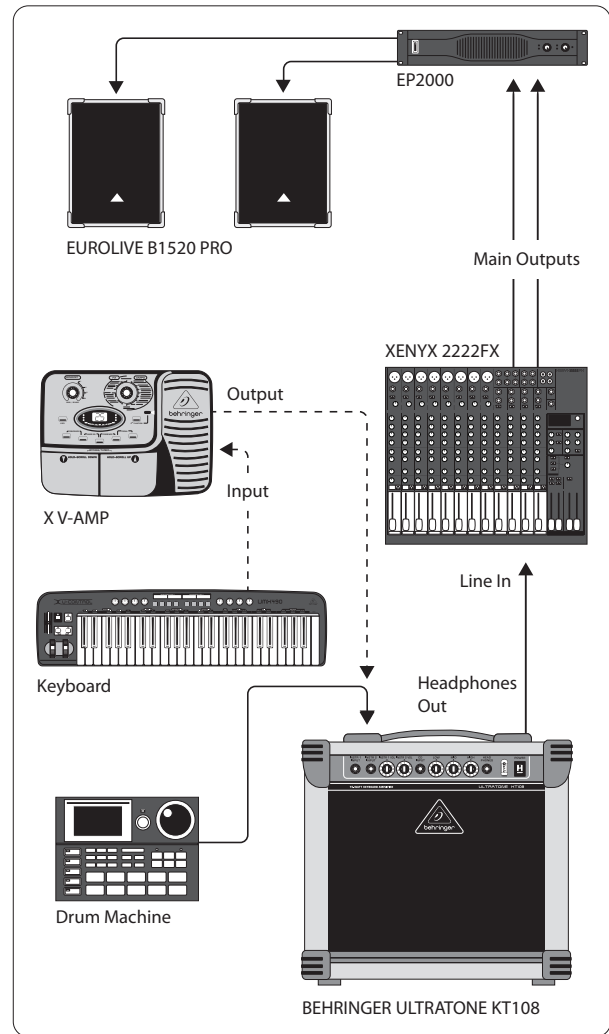


Fig. 2.2: Live setup

3. Control Elements

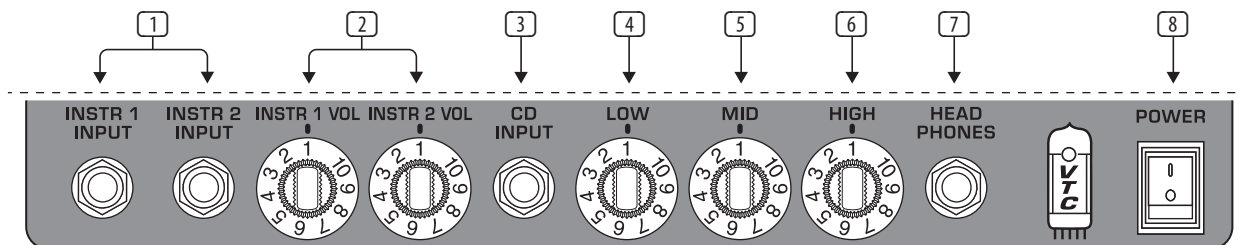


Fig. 3.1: Control elements on the front panel

- 1 Connect your keyboard to the **INST. 1 INPUT** connector, using a standard instrument cable equipped with 1/4" TS connectors.

The second instrument input (**INST. 2 INPUT**) can of course be used to connect a second keyboard or a drum computer.

- 2 The volume of both instrument channels can be adjusted using the **INST. 1 VOL** and **INST. 2 VOL** control.

- 3 Use the **CD INPUT** to connect the output of your CD player, tape deck, CD or MD walkman. This way you can play along to music or keyboard tutorial CDs.

This connector is a 1/4" TRS jack. If your CD player is equipped with cinch outputs, you'll need an adapter cable, which you can buy at your local music shop. Illustration 4.3 in chapter 4, "Audio Connections" shows you what kind of adapter to buy. You can also use a mono cable (fig. 4.4). This will not damage your CD player or keyboard amp.

- 4 The **LOW** control allows you to boost or cut the low-frequency range.
- 5 With the **MID** control you can boost or cut the mid-range frequencies.
- 6 The **HIGH** control adjusts the high-frequency range.
- ♦ With all the settings the following applies: Adjusting the tone settings on your KT108 lets you refine the sound of your keyboard; for example, you can add more depth to a bass sound, or you can bring out the strings upfront by increasing the mids. Sometimes more neutral settings are desired in order to preserve the character of the original sound.
- 7 The **HEADPHONES** jack is for headphones. When you plug in your headphones, the built-in loudspeaker is muted.
- ♦ The headphone signal can also be routed to a mixing console or sound reinforcement system. Connect the headphones output on your KT108 to the line input (LINE IN) on the console (for example, BEHRINGER EURORACK UB1222FX-PRO). Please use a mono cable for this application.
- ♦ Some headphones produce distortion if the volume level is too high. Please cut back the volume control until the distortion disappears.
- 8 Use the **POWER** switch to switch on your KT108. The POWER switch should be set to "Off" before you connect your keyboard amp to the mains.
- ♦ Please note: The POWER switch does not disconnect the unit from the mains. Unplug the power cord when you don't want to use the unit for some time.
- 9 **SERIAL NUMBER.**

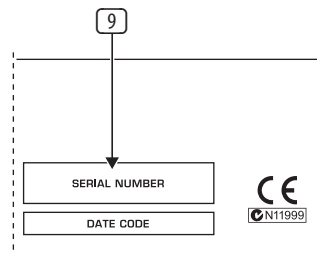


Fig.: 3.2 Rear panel: serial number

4. Audio Connections

All of your amp's inputs and outputs are laid out as 1/4" connectors. More information about the connectors can be found in chapter 5. "Specifications."

- ♦ Please keep in mind that all the equipment has to be grounded at all times. For your own protection, never change or disable the grounding on your equipment or on the cables! The unit shall always be connected to the mains socket outlet with a protective earthing connection.

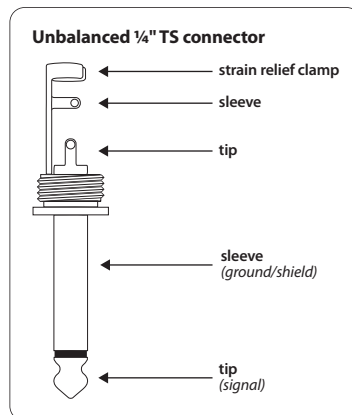


Fig. 4.1: 1/4" TS plug for the INSTRUMENT INPUT (mono)

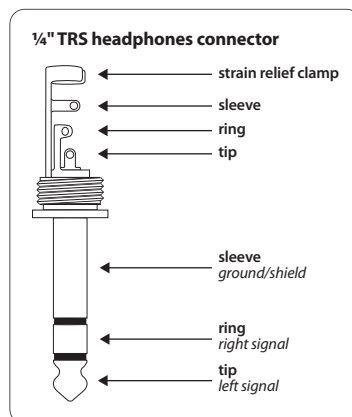


Fig. 4.2: 1/4" TRS plug for headphones and CD input

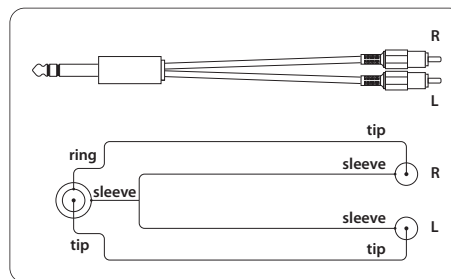


Fig. 4.3: Stereo adapter cable

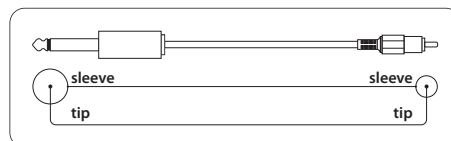


Fig. 4.4: Mono adapter cable

5. Specifications

Audio Inputs

Keyboard input ½ connector	¼" TS mono connectors
CD input connector	¼" TRS stereo connector

Audio Output

Headphones output connector	¼" TRS stereo connector
-----------------------------	-------------------------

System Specifications

Power amp output	15 Watts
------------------	----------

Loudspeaker

Type	8" dual-cone full-range loudspeaker
Impedance	4 Ω
Power rating	20 Watts

Power Supply

Mains Voltage

USA/Canada	120 V~, 60 Hz
U.K./Australia	230 V~, 50 Hz
Europe	230 V~, 50 Hz
Japan	100 V~, 50 - 60 Hz

Dimensions/Weight

Dimensions (H x W x D)	approx. 13 ⅛ x 14 ⅙ x 6 ⅜" approx. 322 x 357 x 162 mm
Weight	approx. 12.1 lbs / 5.5 kg

BEHRINGER is constantly striving to maintain the highest professional standards. As a result of these efforts, modifications may be made from time to time to existing products without prior notice. Specifications and appearance may differ from those listed or shown.



We Hear You